



TORCHLIGHT



Newsletter of the Marathon Central School District
East Main Street, PO Box 339, Marathon, NY 13803

"Enabling all students to achieve academic success, become responsible citizens, and realize their full potential."

VOLUME XXI, ISSUE 1

AUGUST 23, 2010

Carrier Route Presort
US POSTAGE
PAID
BULK RATE
Permit No. 15
Marathon, NY
TO BOXHOLDER

WELCOME BACK



From the Superintendent

5-Year Turnaround of Buses: When and Why?

Beginning with the 2005-2006 school year, the Marathon School District moved from an (approximate) 10-year turnaround of school buses to a 5-year turn around. The move had always made fiscal sense, as I will explain below, but the initial cost of the turnover was always prohibitive. That changed in 2005 when New York State modified the payment schedule for State aid on buses. Prior to 2005, the State had provided full aid payments on buses the next year after they were purchased. Beginning with 2005, however, the State began to amortize, or spread out, aid payments on new buses over a 5-year period. That change created the opening for the Board of Education to consider the 5-year turnaround schedule for the district's buses.

An analysis of the costs of purchasing and maintaining school buses in our district and in neighboring districts showed that because of 1) increased trade-in values and 2) reduced repair, parts, and maintenance costs, a 5-year turnaround of buses could make good financial sense. Based on projected savings at the time, Marathon's Board of Education made a decision to switch over to the more frequent resale of buses beginning in 2005.

Warranties on many major bus parts (body, drive train, and springs) typically last for five years. Warranties on transmissions typically last three. Records prior to 2005 showed that after five years, repair and maintenance costs on our buses rose sharply. The trade-in market on buses with fewer than 75,000 miles was (and still is) strong, and our bus salespeople were telling us that we could expect \$25,000 to \$30,000 per bus if we traded them in after five years with less than 75,000 miles. Our 10-year-old trade-ins were netting less than \$5,000 in trade in (see the chart below for actual trade-ins we have received on buses since 2004 (with the age of the bus in parentheses)).

(Continued on page 2)

Farewell in June means welcome back in September.

Staff wave good-bye in front of Appleby on the last day of school in June. Staff at both buildings are now preparing for the arrival of students on September 8th to begin the 2010-2011 school year. Welcome Back!

Moving Up in June



Telephone Directory of District Offices

- Mr. Timothy Turecek, Superintendent of Schools849-3117
- Mrs. Karen Braman, Business Manager849-3226
- Ms. Thayer Miller, Director of Instruction849-3245
- Ms. Carole Ann Davies, CSE Chairperson849-3167
- Mrs. Mary Bliss, Tax Collector.....849-3230
- Marathon Jr/Sr High School849-3251
- HS Guidance Office.....849-3229
- HS Health Office849-3210
- Appleby Elementary School849-3281
- Appleby Elementary Health Office849-3180
- District Transportation/Bus Garage849-3325

From the Superintendent...

(Continued from page 1)

04-05- \$4200 (11 years old); \$4100 (11).
 05-06- \$1800 (11); \$2500 (11); \$4500 (10); \$4900 (10); \$3500 (9)
 06-07- \$3000 (9); \$3000 (9); \$3800 (8); \$3800 (8); \$9500 (7)
 07-08- \$5000 (8); \$9000 (7); \$9000 (6)
 08-09- \$6000 (8); 18,000 (7); 18,000 (6)
 09-10- \$24,000 (6); \$24,000 (6); \$30,000 (5); \$30,000 (5)

Our effective State Aid ratio on bus purchases is 75%. Using the estimate on trade-ins combined with the State Aid, we figured our cost per bus as follows (I use rounded numbers here to illustrate the concept, though actual purchase and trade-in values were used as the basis for projections in the Board's decision. I should also note that where estimates are used, we use conservative numbers to insure that we are not exaggerating savings). Here is the formula:

Cost of 1 bus = \$100,000
 Trade in value after 10 years: \$5,000
 Trade-in value after 5 years: \$30,000
 Local share cost per bus after State Aid and trade in- 10 year trade-in:
 (\$100,000- \$5,000) X .25 = \$23,750/bus.
 Local share cost per bus after State Aid and trade in- 5 year trade-in:
 (\$100,000- \$30,000) X .25 = \$17,500/bus.

Payments on the \$23,750 above would be spread out over 10 years, however, so that the annual cost for that bus to the district would equal $\$23,750 \div 10 = \mathbf{\$2375/bus/year}$ for a ten year turnaround. Because payments on the 5-year turnout are spread over only 5 years, the annual cost would be more, or $\$17,500 \div 5 = \mathbf{\$3500/bus/year}$ for a five year turnaround.

Based on trade-in value alone, then, the 5-year turnaround will cost \$1125/bus/year more. We have 20 buses, so that the additional annual cost for the 5-year turnaround on the entire fleet will be \$22,500/year.

The next variable we need to consider, though, is the cost of parts and repairs necessary to maintain our vehicles for an additional five years. At the time we converted to the 5-year turnaround, we predicted, based on the pattern of repair costs prior to that time, that we would save enough in parts to offset these additional purchase costs. Since that time, we have, of course, been able to collect actual costs for parts. (Please see the chart entitled "Bus Repair Record"). Costs for tires, oil changes, and cleaning buses are not effected much by a 5-year or 10-year turnaround, and costs for "Vehicle Repair" will include costs for accidents to buses (as in the 2008-2009 school year). The "Parts" column 5510.456 is the important one for our present analysis, and you will see that that column shows a reduction in our average parts costs of \$42,170/year in 2001-2005 to \$24,877/year for 2005-2010. We have seen a \$17,000/year average savings during our transition to the 5-year turnaround. Subtracting that average savings in parts from the increase in purchase cost of the fleet ($\$22,500 - \$17,000 = \$5,500$) shows an **overall cost of the 5-year turnaround to be \$5,500/year.**

For this \$5,500/year, we are able to provide our children with the newest and safest buses available. Each bus must pass a rigorous DOT inspection two times a year, and, in part because of our more frequent turnover of our fleet, our transportation staff has achieved a 100% passing rate on DOT inspections over each of the past six months.

In addition to the more frequent turnaround in our bus fleet, we have taken other measures as well to contain the costs of our transportation operation without compromising safety or quality of service. We have eliminated two bus routes (two driving positions as well as two buses) through the consolidation of routes in the last three years, and we continue to look at creative solutions for further combinations of routes. This year, we earned \$2400 in the

resale of unused parts to a neighboring district, and we have begun to keep complete records of all small parts purchases with the aim of reducing these costs as well. We have experimented with running only one late bus run per week (though, at this point, we have determined that the savings are not sufficient to justify the loss to student programs). We have made reductions in sports trips, field trips, and other extra trip miles not aided by the State while we have still maintained a high level of services to the community and our children.

Last May, voters in the Marathon School District did not approve the purchase of three additional buses. Given the current economic conditions, that was a reasonable decision. Not buying those buses will save the district \$10,500 per year over each of the five years the contract would have been in place. There are costs that will cut into that savings, but the money saved is still significant.

The four buses we had slated for trade-in this year are well below the 75,000 mile cut off at which trade-in value drops off significantly (they are at 51,000, 53,000, 47,000 and 57,000 miles respectively). Based on this lower mileage, we were expecting to earn trade-in values in excess of \$30,000 on these vehicles this year, but even after six years, these vehicles should maintain their resale value in the anticipated range of \$30,000. We have had to invest some money in the maintenance of these buses this summer that would have been avoided had we traded them in at the end of five years. Specifically, we have had to repaint these buses (~\$3,000 per bus), and we have had to replace fuel tanks on two of the buses (at approximately \$1200/bus) that Mr. Brooks attributes to a design change he is working with the manufacturer to try to resolve.

While we work to contain costs in the transportation area, as in every other area, we continue to be bombarded by ever greater governmental regulations, requirements, and audits of records from multiple agencies that, often, have the effect of increasing costs to the district and its taxpayers. Next year, for example, new emissions standards will significantly increase the cost of new buses in NYS. This battery of new and ever changing regulations has the added effect of increasing the bureaucratic burden on every level of the school staff at a time when we are working diligently to find areas to cut.

Beginning in November, the Board of Education will be looking closely at future bus purchases and will consider whether it will be most cost effective to go to a 6-year turnaround in general. They will also consider all available figures to determine if it will be cost effective to maintain this latest round of vehicles for a seventh year. We continue to look at a wide range of creative strategies for the future that will allow us to keep transportation costs as reasonable as possible while still ensuring the safety and service to our families and community.

Our twin goals, as always, are 1) to maintain the highest quality educational programs possible within the limited means of the community and 2) to work smarter and more creatively to save money where we can in a difficult economy and political situation.

If you have questions about the transportation budget or any of the material discussed above, please do not hesitate to contact me or Kathy Julian, our Transportation Supervisor at 849-3325.

I would be particularly interested in hearing any and all creative ideas for saving money in the district now- in advance of the Board's official budget development season that begins in December. Your thoughts now will give us time to build and investigate your ideas before it comes time to crunch the numbers. Every idea is worth considering, and I have faith that there are ideas out there that I, and the Board, have not thought of. I can be reached at [turecek@marathon.cnyric.org](mailto:tturecek@marathon.cnyric.org) or at 849-3117. In person meetings would be welcome as well. I look forward to hearing from you. Tim Turecek, Superintendent.

Bus Repair Record						
	5510.405	5510.451	5510.452	5510.455	5510.456	5510.457
<u>Year</u>	<u>Vehicle Re-</u>	<u>Paint/(Wash/</u>	<u>Bus Cleaning</u>	<u>Oils/Lubs</u>	<u>Parts</u>	<u>Tires *</u>
2001-2002	\$20,256	\$2,353	\$313		\$40,726	\$5,076
2002-2003	\$3,493	\$231	\$731		\$43,467	\$10,605
2003-2004	-\$2,152	\$575	\$593		\$41,590	\$8,230
2004-2005	\$0	\$947	\$981		\$42,895	\$3,478
2005-2006	\$45	\$1,058	\$2,551		\$32,389	\$8,035
2006-2007	\$79	\$951	\$4,872		\$16,644	\$7,862
2007-2008	\$1,783	\$1,380	\$8,101	\$6,897	\$23,639	\$6,474
2008-2009	\$17,386	\$1,109	\$1,844	\$5,264	\$27,856	\$13,014
2009-2010	\$1,271	\$725	\$0	\$3,792	\$23,440	\$5,347
AVERAGE =	\$4,685	\$1,076	\$2,221	\$5,348	\$32,516	\$7,569

Meals at Marathon

Marathon Central School District provides a nutritious breakfast and lunch in both schools every day to ensure healthy growth of our children's minds and bodies.

Households that meet Federal income guidelines (outlined below) are eligible for free or reduced price (\$0.25) meals. There are two ways to apply:

- Submit a **Direct Certification Letter** that you can obtain from the NYS Office of Temporary Disability Assistance. At the bottom, fill in your student's grade and for elementary students, the classroom teacher's name **OR**
- Fill out an **Application**, being careful to follow the directions carefully---particularly for situations involving foster children, food stamps or Temporary Assistance to Needy Families. Applications will be available the first day of school in your child's homeroom.

Only one application needs to be filled out for each household, but make sure all members of the household are listed. Please feel free to apply for benefits at any time during the year if your household income decreases or your household size increases.

Please note that last year's benefits are extended through September 30, 2010. After that date, all students must pay full price unless an up-to-date application is on file.

Verification: The school may notify you, in writing, if you have been selected to verify your eligibility. At that time, you would be required to send additional information proving your income.

Nondiscrimination: Children who receive free or reduced price meals are treated the same as children who pay for meals. **IN THE OPERATION OF CHILD FEEDING PROGRAMS, NO CHILD WILL BE DISCRIMINATED AGAINST BECAUSE OF RACE, GENDER, OR SEXUAL ORIENTATION, COLOR, NATIONAL ORIGIN, AGE, OR HANDICAP.** If you believe you have been discriminated against, write immediately to the Secretary of Agriculture, Washington D.C. 20250.

Fair Hearing: You have the right to a fair hearing if you do not agree with the school's decision on your application or the result of verification. Call or write to: Timothy J. Turecek, Superintendent; MCS D; PO Box 339; Marathon, NY 13803. (Phone 849-3117)

Meal Service to Children with Disabilities: Federal law requires schools to serve meals at no extra charge to children with a disability which may restrict their diet. A student with a disability is defined in 7CFR Part 15b.3 of Federal regulations as one who has "a physical or mental impairment which substantially limits one or more major life activities..." Major life activities are defined to include functions such as caring for one's self, performing manual tasks, walking, seeing, hearing, speaking, breathing, learning, and working. If you believe your child qualifies for meal substitutions because of a disability, please contact Paulette Fry (849-3224) for specific requirements for the medical certification.

Confidentiality: The United States Department of Agriculture has approved the release of students' names and eligibility status, without parental/guardian consent, to persons directly connected with the administration or enforcement of federal education programs such as Title I and the National Assessment of Educational Progress (NAEP), which are United States Department of Education programs used to determine areas such as the allocation of funds to schools, to evaluate socioeconomic status of the school's attendance area, and to assess educational progress. Information may also be released to State health or State education programs administered by the State agency or local education agency, provided the State or local education agency administers the program, and federal, State or local nutrition programs similar to the National School Lunch Program. Additionally, *all* information contained in the free and reduced price application may be released to persons directly connected with the administration or enforcement of programs authorized under the National School Lunch Act (NSLA) or Child Nutrition Act (CAN); including the National School Lunch and School Breakfast Programs, the Special Milk Program, the Child and Adult Care Food Program, Summer Food Service Program and the Special Supplemental Nutrition Program for Woman, Infants and Children (WIC); the Comptroller General of the United States for audit purposes, and federal, State or local law enforcement officials investigating alleged violation of the programs under the NSLA or CNA.

Income Exclusions: The value of any child care provided or arranged, or any amount received as payment for such child care or reimbursement for costs incurred for such care under the Child Care Development (Block Grant) Fund should not be considered as income for this program.

REDUCED PRICE ELIGIBILITY INCOME CHART Effective from July 1, 2010 to June 30, 2011

Household Size	Annual	Monthly	Twice-Monthly	Bi-Weekly	Weekly
1	\$20,036	\$1,670	\$835	\$771	\$386
2	26,955	2,247	1,124	1,037	519
3	33,874	2,823	1,412	1,303	652
4	40,793	3,400	1,700	1,569	785
5	47,712	3,976	1,988	1,836	918
6	54,631	4,553	2,277	2,102	1,051
7	61,550	5,130	2,565	2,368	1,184
8	68,469	5,706	2,853	2,634	1,317

For each additional family member, ADD:
+6,919 +577 +289 +267 +134

Please return your **Direct Certification letter** or **Application** as soon as possible to your child's teacher or to:
Karen Braman, Business Office
Marathon Central School
PO Box 339
Marathon, New York 13803

You will be notified when the application is approved or denied.



Meal Prices for 2010-2011

Appleby Elementary School
Breakfast \$1.00
Lunch \$1.50

Marathon Jr.-Sr. High
Breakfast \$1.00
Lunch \$1.75

Free and reduced lunch applications are available at the nurse's office in each building. Fill out just one application per family.

Marathon Scholarship Foundation 5K Run



PARENT VOLUNTEERS NEEDED

Parental involvement is one of the factors for student success in school. We understand that not every parent can help out in school, but there are many ways that you or a family member can help. Please consider giving your time to your child's teacher, school (both Appleby elementary and high school, the PTO or the Booster Club. Volunteers are a valuable resource to the educational system. You do not have to have a child in a class to volunteer. There is no special training needed – the teachers or a staff member will train the volunteer. Volunteers may donate as little as a few hours a week.

General activities may include:

- Assisting students in reading and other academic activities;
- Classroom assistant for special projects;
- Helping out in the cafeteria at lunch;
- Chaperoning on field trips, and other school activities;
- End of the year activities.

Please call the Appleby main office at 849-3281, the high school office at 849-3251, or talk to your child's teacher to assist with the above activities.

Thank you,
Appleby and the Marathon PTO

If you can help with any of the activities listed below, just return the bottom portion of this sheet to the Appleby main office (either in person or by your child).

- _____ Help in the library at the High School
- _____ Help in the library at Appleby
- _____ Santa's Secret Shop (early December, during school hours, work a few hours, a day or several days)
- _____ Classroom volunteers
- _____ Maple Festival Discovery Center, work a shift at the discovery center helping and supervising the children.
- _____ Counting Campbells' labels

Name _____ Phone # _____

Child's Classroom _____

**New York State Assessments
for the
2010-11 School Year**

Students in grades 3-8 will be taking assessments in both English Language Arts and Math. Due to budget restrictions at the State level the social studies assessment for grades 5 & 8 have been eliminated. A local assessment will be developed. The remaining test schedule is as follows:

- January Regents—January 25-28, 2011;
- Grades 3 - 8 ELA – May 4-6, 2011;
- Grades 3 - 8 Mathematics – May 11 - 13, 2011;
- Grade 4 Science Performance Test—June 1 & 2, 2011;
- Grade 8 Science Performance Test – June 2, 2011;
- Grades 4 & 8 Science Written Test –June 6, 2011;
- June Regents— June 15-23, 2011.

The requirements for graduation are also changing and incoming ninth grade students will need additional regents to graduate with either a Regents or Advanced Regents Degree. The State has also raised the passing grade on all regents to 65.

If you have questions or concerns please contact the Elementary Office, 849-3281 or the HS Guidance Office, 849-3229.

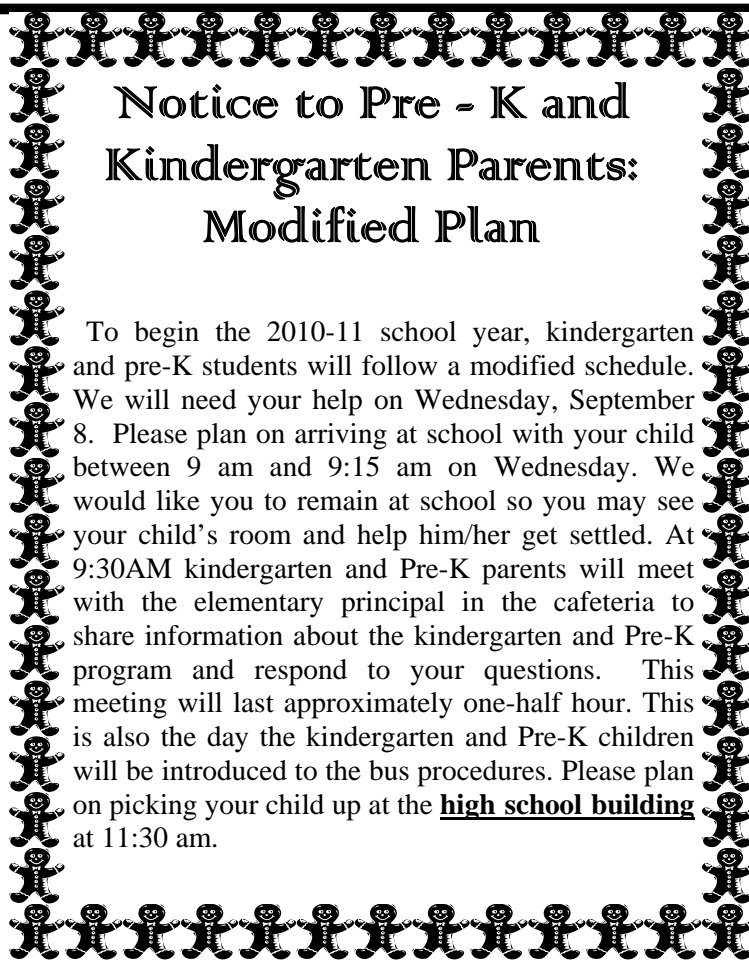
**Welcome Back to
Appleby Elementary School**

As the warm summer days are flying by, the staff at Appleby are busily preparing for the first day of the new school year. I still get the same feeling of excitement and anticipation that I did when I first started my teaching career over 30 years ago. What a joy it is to welcome all of those smiling faces!

The Appleby custodial staff has been working diligently to clean and prepare the classrooms for the first day. Each room is completely emptied so that every area in the room can be cleaned. Our large gym received a new coat of paint this summer. It is now a bright and cheerful

learning station. A big thank you to our staff: Alberta Zurbruegg, Emmett Potts, Cathy Whritenour, Ed Poth, Ray Prentice, Cindy Whitney and Mike Jennison. Congratulations on a job well done!

Our Appleby faculty has been busy this summer. Not only did we have sev-



**Notice to Pre - K and
Kindergarten Parents:
Modified Plan**

To begin the 2010-11 school year, kindergarten and pre-K students will follow a modified schedule. We will need your help on Wednesday, September 8. Please plan on arriving at school with your child between 9 am and 9:15 am on Wednesday. We would like you to remain at school so you may see your child's room and help him/her get settled. At 9:30AM kindergarten and Pre-K parents will meet with the elementary principal in the cafeteria to share information about the kindergarten and Pre-K program and respond to your questions. This meeting will last approximately one-half hour. This is also the day the kindergarten and Pre-K children will be introduced to the bus procedures. Please plan on picking your child up at the high school building at 11:30 am.

2010-11 SCHOOL CALENDAR

September	6	Labor Day
	7	Teacher Orientation
	8	First Day of School
October	11	Columbus Day
	12	Superintendent's Conference Day
	13	Professional Development Day
November	11	Veteran's Day
	12	Professional Day 7-12/Parent Conferences K-6 - NO SCHOOL
	24-26	Thanksgiving Vacation
December	24-31	Christmas Recess
January	1	New Years Day
	3	School Resumes
	17	Martin Luther King Day
	25-28	Regents
	31	Staff Work Day
February	21	President's Day
	22	Mid-Winter Break
April	21	Good Friday
	18-22	Spring Recess
May	30	Memorial Day
June	15-23	Regents
	24	Last Day of School

**2010-2011 Marathon
Report Card Schedule**

Appleby

November 12, 2010

February 3, 2011

April 28, 2011

June 21, 2011

Marathon Jr./Sr. High

November 19, 2010

February 4, 2011

April 8, 2011

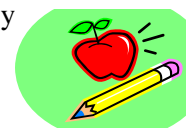
June 24, 2011

eral staff members teach summer school, many others have been working on curriculum this summer. We have only one staff change this fall. Mrs. Brandi Guinn will be taking Mrs. Hayes' position while she is on maternity leave.

The buses will roll in on Wednesday, September 8,

2010 and we will be off on our latest school adventure. The new school year promises to bring new faces, new ideas and lots of new fun for everyone at Appleby.

Shelley Warnow,
Elementary
Principal



A Word from the Elementary Health Office...

We would like to remind parents that the NYS Education Department requires the school health office to have the following information on file if a medication needs to be given during school hours.

1.) A written statement from parent/guardian requesting that the medication be administered during school hours as ordered by a licensed practitioner.

- 2.) A written order for prescription or non-prescription medications should minimally include:
- student's name and date of birth
 - diagnosis,
 - name of medication,
 - dosage and route of administration,
 - self-administration orders, if indicated,
 - frequency and time of administration,
 - for prn (as necessary) medications, conditions under which medication should be administered,
 - date written,
 - prescriber's name, title, and signature, and
 - prescriber's phone number.

3. All medications must be delivered to the school health office by a parent/guardian.

4. Medication (including over-the-counter medication) must be delivered in a properly labeled container. The pharmacy label must display:

- student's name,
- name and phone number of pharmacy
- licensed prescriber's name,
- date and number of refills,
- frequency of administration, and
- route of administration and/or other directions.

Medications sent to school with a child or medications which do not meet the NYS Department of Education criteria for in-school administration cannot be given to a student.

In an effort to make this process easy for parents and physicians, the school health office has medication administration forms that can be sent home for parents to take to the doctor's office for any upcoming visits.

Thank you for your help in this matter. Please feel free to call us with any questions at 849-3180 at Appleby or 849-3210 at the High School.

Health Office Requirements UPK, K, & 6

The following paperwork is required **before** the first day of school:

UPK-An updated copy of their immunizations and their most recent physical-within the last 12 months

Kindergarten-An updated copy of their immunizations and their most recent physical-within the last 12 months

6th grade-A copy of their Tdap immunization if they are 11 years or older

They can be mailed, delivered in person or faxed directly from your doctor's office. The fax number at Appleby is 849-4702.

Thank you, Mrs. Kellicutt, Appleby School Nurse

FREE PRE-SCHOOL!!

Applications are now being accepted at CAPCO Head Start for the 2009-2010 program year for children who will be 3 or 4 years old by December 1, 2009. This free pre-school program serves children and their families who are income eligible. For more information or an application, please call (607) 753-6781. Give your child a Head Start!!

Fall Pesticide Update

The *Pesticide Neighbor Notification Law* (Section 409-h of the Education Law) requires the district to notify school parents or guardians and school staff that pesticides may be used at the Marathon school facilities or on school grounds throughout the school year. Three times a year, the date, location, and product used since the last notification will be published in this forum.

We are further required to maintain a list of parents, guardians, and staff who wish to receive 48 hour written advanced notice from the school of an actual pesticide application of certain types of products. The company which is responsible for pest control at our schools does *not*, under normal circumstances, use the types of pesticides falling into this notification category. However, if you wish to receive this notice in the event such pesticides become necessary, you may register in the Business Office during school hours.

For further information, please contact Paulette Fry, Business Administrator, at 849-3224.

School Supply List 2010-2011

UPK

Blanket/stuffed animal, paint shirt and sneakers (for PE and recess). An extra change of clothes. Please label everything.

KINDERGARTEN

Crayon box (or a container with a lid), sneakers for recess and PE, labeled paint shirt, backpack (no wheels please) and 2 boxes of 24 crayons.

PRE-FIRST

One two-pocket folder, back pack (no wheels please), 1 eraser, sneakers for recess and P.E., one pack of #2 pencils and 1 box of 24 crayons. Please do not send in any pens or pencil sharpeners.

FIRST GRADE

One dozen #2 pencils, 1 box of 24 crayons, 4 glue sticks, sneakers for PE and recess, backpack (no wheels), one 2-pocket solid color folder (on rings in center).

SECOND GRADE

Supply box (5 x 8 please – no bigger), backpack (no wheels), 2 dozen pencils, 2 packages of cap erasers, crayons and colored pencils (no more than 24), 2 composition notebooks, four 2-pocket folders (red, blue, green, yellow), 1 single subject notebook wide-ruled, 2 glue sticks, sneakers for PE and recess.

THIRD GRADE

Five 2-pockets folders, one pack of wide-ruled, loose leaf paper, erasers, pencil box (5x8), one small box of colored pencils or crayons, #2 pencils, one composition notebook, 3 single subject notebooks (wide ruled) and sneakers for PE and recess. No binders please.

FOURTH GRADE

Small box of crayons or colored pencils, 3 single subject notebooks, 5-6 pocket folders, one ruler (standard and metric), one box # 2 pencils, several blue or black ball point pens, and 1 package of loose leaf wide-ruled paper.

FIFTH GRADE

All students: Colored utensils, 1 package of loose leaf paper, pencils, a smile and a positive can-do attitude.

Math – 1 or 1 ½ inch three-ring binder

Reading/ELA – two 2-pocket folders w/ fasteners in the middle

Social Studies - 1 or 1 ½ inch three-ring binder

Science – teachers will provide any needed materials

SIXTH GRADE

Social Studies – 2-pocket folder and a one inch binder

Science – 2-pocket folder, single subject notebook

Math – a one inch binder

ELA – composition notebook

General – 2 packages of loose leaf paper, crayons or colored pencils, 24 #2 pencils, 2 book covers, scissors, highlighter and a pencil bag w/ zipper

Communication tool – The Sixth Grade team would like to create a list-serve to use as a communication tool with parents. We are asking that parents send us their email address so we can contact them with important information regarding their child and class events in general. Please send your email address to: sixthgrade@marathon.cnyric.org. Your child's first and last name should be placed in the subject line of the email.

7th GRADE SCHOOL SUPPLIES

ENGLISH– Mr. Degan-(1) 1 ½" 3-ring binder, Filler paper – college ruled, 2 composition notebooks – preferably the hardcover marble kind, black or blue ink pens, Post-it Notes

MATH– Mr. Swartz- Pencils, loose leaf paper/notebook

SCIENCE – Mrs. Farkas- 3 ring binder – at least 1" binding, pens/pencils, colored pencils, index cards

SOCIAL STUDIES – Mr. Perks- Folder, notebook

TECHNOLOGY– Mrs. McDougal- Small flash drive could be helpful (available for \$5 when school starts)

SPANISH 7, I and II – Mrs. Forrest- 3 subject notebook, 2 two pocket folders w/ fasteners, pens, loose leaf paper, index cards

MS. SIESEL

Grade 8: 1" binder, pencils and pens, one small package of loose leaf paper. (NO SPIRAL NOTEBOOKS)

AP Government: Organizer for notes and handouts.

(Continued on page 6)

Some Important Information

Length of School Day: District school hours are from 8:00 am through 3:15 pm. Buses usually load around 2:45 pm each day at Appleby and then travel to the high school. The school does not provide supervision services before school begins at either building.

We caution parents that they should not drop students off at school prior to 7:55 am.

Late Bus: In 2010-2011, late buses will run Tuesday and Thursday, leaving Appleby at about 4:20 pm and then pick up at the high school. Only students who have signed up to stay with a teacher or for detention may ride the late bus home.

Bus Issues: Please call the bus garage (849-3325) for questions, issues, pick up times, etc. If no answer call the high school or elementary office.

Emergency School Closings: Emergency closings due to weather will be broadcast over the following radio and television stations between 6:30-7:00 am.

Radio Stations:

- 930 AM – WKRT (Cortland)
- 1290 AM – WNBF (Binghamton)
- 1360 AM – WKOP (Binghamton)
- 98.1 FM – WHWK (Binghamton)
- 99.1 FM – WAAL (Binghamton)
- 101.5 FM – WXHC (Homer)

Television Stations:

- WBNG – Channel 12 (Binghamton)
- WIVT – Channel 34 (Binghamton)
- WTVH – Channel 5 (Syracuse)

Change of Address and/or Telephone Number: It is most important that our records have your most recent address and phone number. Please contact your child's teacher, the school secretary, or the guidance office as soon as the change takes place.

Visitors: All visitors to must report to the Main Office of each building immediately upon entering the building and indicate each destination they wish to travel to. Approval to remain in the building or on the grounds will be at the discretion of the building principal. All visitors are expected to sign in, indicate each destination, and to conspicuously wear a visitor's badge. Visitors may not travel directly to a location in the building without first checking in at the Main Office.

Parent Access to Teachers: The best time to reach a teacher would be at 3:15 pm. If you call at any other time during the day, the school secretary will take a message. The teacher will return your call as soon as possible.

Healthy Heart Activities: Hall walking will be open at Appleby from 6:30am to 8:00am every morning and 6:30pm to 8:00pm every evening when school is in session. The Fitness Center at the High School will open in September on the same schedule as last year. Please call the high school office for the schedule of times.

(Continued from page 5)

ENGLISH 11 AND TC3

One-3 ring binder, one pack dividers, loose leaf paper, two packages of pens, one pack small square sticky notes, one spiral notebook

MR. JAMES

College Accounting, Wordprocessing, Sports Marketing, Webpage Design and Computer Theory - 1.5 Inch or 2 inch three-ring binder
College Accounting - Basic Large Key Calculator.

MR. MOUSAW

English 9: Two 1-subject spiral notebooks, two packages of pens (blue or black), a flash drive (optional).

MRS. EATON

Global History and Geography 10: 1 1/2 " or 2" 3-ring binder with five tabs. Seniors will need a spiral notebook and one 2-pocket folder.

MRS. BROWN

Regents US History: binder, 5 divider tabs, loose leaf paper, pens/pencils, folder. Recommended: Flash drive, index cards
AP TC3 US History: binder, 5 divider tabs, loose leaf paper or 1 spiral notebook, pens/pencils, folder, 4x6 index cards. Recommended: Flash drive

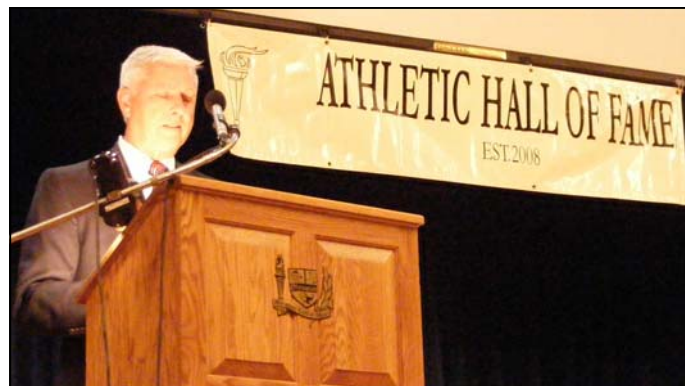
MR. EVANS

Algebra and Foundations I or II -2 - 1 subject spiral notebooks, folder and pencils with erasers.

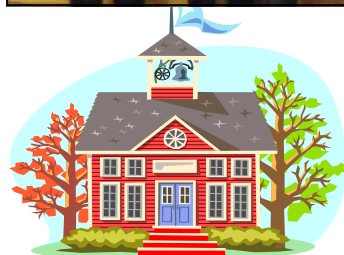
Athletic Hall of Fame Inductees

On Friday, June 25, 2010 the Third Annual Induction ceremony for the Athletic Hall of Fame took place at Marathon High School. This year twelve former Marathon athletes were recognized for their accomplishments and Mr. Arnold. This year's inductees were:

Stephen H. Arnold	Contributor
Marty Kinner	'76
Ron Smith	'76
Roger Parker	'77
Jeff Marker	'78
James E. Joseph	'79
Stephen P. Joseph	'80
Raymond Marsh	'80
Cindy Harding Grzebin	'81
Deborah Niggli	'81
Mark Wainwright	'82
Cheryl Doty Hamilton	'85
Keith D. Pitman	'85



Congratulations!



September 2010



Sunday	Monday	Tuesday	Wednesday	Thursday	Friday	Saturday
			1	2	3	4
			5	6 Labor Day	7 Staff Day	8 First Day of School BOE Meeting HS Library 7 pm
12	13	14	15	16 HS Open House 6:30 - 8:00 Marching Band Candy Sale (9/16 - 9/29)	17 Sr. Dance (7-12) 	18
19	20 Appleby Pictures 9/20 - 21 Marathon Community Scholarship Foundation HS H & C Room 7 pm	21 PTO 7pm Appleby Cafeteria International Day of Peace	22 BOE Meeting HS Library 7 pm HS Pictures	23 Student Council Elections	24 Fall Pep Rally 	25 Homecoming Dance
26 Jr. Applebees Breakfast 8-10	27	28	29	30		

Attention all Marathon School District Employees

**Mandatory Right-to-Know and
Blood-Borne
Pathogens Training will be offered
in the
High School
Auditorium**



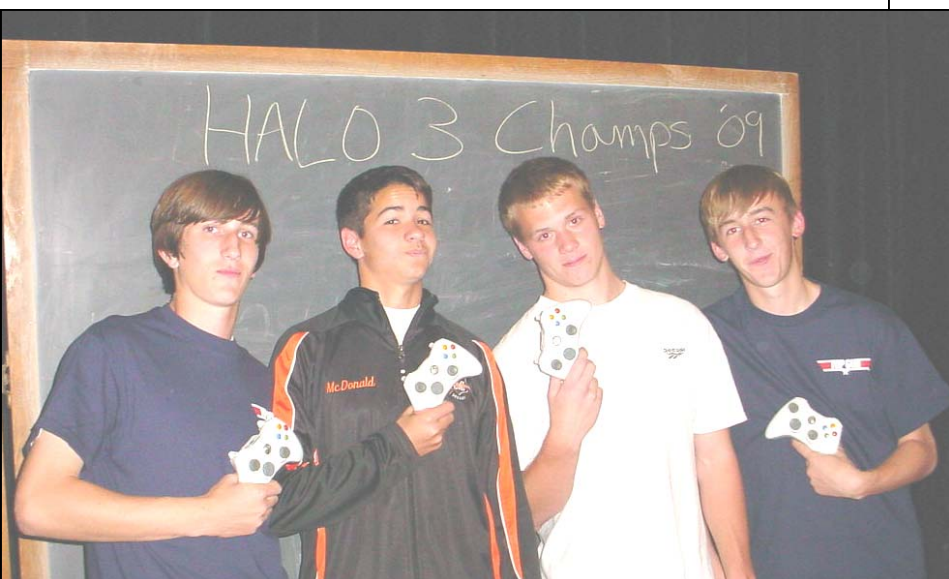
**Tuesday,
September 7
@ 1:00PM**

CELLULAR TELEPHONES/PERSONAL COMMUNICATION TECHNOLOGY

Is it clear that cellular communications have become a necessary way of life for students and adults alike. This being said, it must be understood that these conveniences cannot be allowed to create disruptions during the school academic time. We have revised our cell phone policy this year in an attempt to strike a healthy balance between our changing world and maintaining our focus on academic success. As with any expensive personal item, the school will not take responsibility for these devices if brought to school. Our expectation is that students will show respect for this policy and will be compliant. This policy is devised with a balance of respect for our students as well as respect for our need for an appropriate school environment.

- Cell phone use will be allowed in the building prior to the 8:14 bell that sends students to their first period classes.
- Cell phone use will not be allowed in any classrooms. This includes class time, study halls or any time you are in any classroom in the building. This specifically includes the guidance office and library as well.
- We will allow cell phone use during your lunch period in the cafeteria.
- Students are not to be using their cell phones in the hallways between classes. We have provided ample opportunity for their use throughout the school day.
- At the 3:06 bell, cell phone use will once again be allowed.

It is important to remember that violations of this policy will occur and that the students who do not respect this freedom for the use of cell phones, may be subject to disciplinary action ranging from a warning regarding the violation to confiscation of their cell phone and its return to their parent. We do not wish this issue to become a source of irritation and do not feel that given this policy that it should become a disciplinary issue. Students will be required to abide by this policy.



Title I - No Child Left Behind Parent Informational Meeting

**Thursday, October 14th @ 6:00PM
Appleby Exploratorium**

Marathon Central School District Pupil Attendance Policy

The Marathon Central School District Board of Education recognizes the clear correlation between student success in meeting the New York State and district educational standards and excellent student attendance at school. It is the opinion of the board that our community places a high value upon the education provided by its schools and expects parents/guardians, students, and district personnel, to hold high standards for student attendance at school. The expectation that students will be in attendance at school every day and be prepared to learn, is one that should be uniformly understood and embraced by all who deal with our children. It is for this reason that the following Pupil Attendance Policy has been developed and approved by the Board of Education.

Policy Objectives

- To improve academic performance of all students by maintaining an adequate record verifying the attendance of all children at instruction.
- Provide a clearly written and functional policy to be a basis of governing issues of student attendance in our schools.
- Adequately inform all students, parents/guardians, and educational stakeholders regarding their rights and responsibilities in the area of student attendance.
 1. Publicize in the district newsletter.
 2. Review the policy with students K-12 at the beginning of each school year.
 3. Attendance policy included in student handbooks.
 4. Review the policy with all faculty and staff to clarify roles in its implementation at the beginning of each school year.
- Provide direction and guidance from the Board of Education, for the revision of administrative practices in dealing with attendance issues.
 1. Develop building level practices reflective of the revised attendance policy.
- Set in place a philosophy and policy that will influence individual attitudes, that over time will improve student attendance in our schools.
 1. Clearly articulate to all stakeholders what the expectations for student attendance are.

Excused and Unexcused Absences

It is evident that though this policy strives to encourage all students to be in attendance at school everyday of the school calendar, the reality is that this will most likely be interrupted by a myriad of life's circumstances. This section sets forth a system by which students; parents/guardians and school personnel can categorize student absences from school or from individual scheduled classes.

A. Excused absences are those that are caused by valid circumstances that prohibit a particular student from being in attendance at school, and are therefore recognized by the Board of Education as "excused" or permissible reasons for non-attendance on a particular day(s).

Examples of "Excused Absences"

1. *Personal illness or sickness that requires the student to remain home for care.*
2. *Illness in the immediate family that in the eyes of the parents/guardians necessitates the students to be retained at home for assistance*
3. *A death in the family or attendance at a funeral.*
4. *A religious observance.*
5. *An approved school sponsored trip or one that has been approved by the building Principal as having substantial educational value or a school sponsored or sanctioned arts or sporting event.*
6. *A required court appearance or appointment with probation or one's own attorney.*
7. *Impassable roads or weather conditions making travel hazardous and unsafe.*
8. *Medical or dental appointments.*
9. *Special consideration requested by the parents/guardians and pre-approved by the building principal.*

Parents/guardians may request special consideration to detain a child from school, particularly in emergency situations or for extended travel. Requests for such consideration must be directed to the appropriate building principal in consultation with the Superintendent of Schools. Their decision will be final.

There are additional instances where attendance at school may be "excused", that only occur on an occasional basis. Examples of these are: a college visitation, military obligation, incarceration, employment interview, hospitalization, motor vehicle road test, or other rare and unique occurrences approved in advance by the building principal, and recorded as "excused" absences.

Students are expected to follow their class schedule while on school premises. If a student becomes ill, he/she must report to the nurse's office. If the student is requested or required to be in other than his/her scheduled area, he/she must first report to the proper person, i.e., classroom teacher or study hall supervisor, and then request permission to move to another area.

B. Unexcused absences are those absences from required attendance that do not meet the criteria set in the above paragraphs dealing with excused absences.

Examples of Unexcused Absences

1. *Truancy – the willful avoidance of attending school without an approved reason. Examples may include but are not limited to: hunting, fishing, shopping, hair care.*
2. *Oversleeping*
3. *Missing the school bus*
4. *Babysitting or involuntary childcare (parents/guardians keeping child home to care for another child or children) without approval.*
5. *Employment- without an approved work permit signed by the building principal excusing the student from school attendance.*
6. *Family vacations during the school year calendar when attendance is required.*
7. *"Cutting" class – simply not reporting to a scheduled class without permission.*
8. *Tardiness – Chronic tardiness is disruptive to both teachers and fellow students and therefore will not be tolerated. The Board of Education believes it is important to ensure students are attending class, as well as arriving to class on time, since these are essential aspects in maintaining an orderly and conducive environment for learning. Tardiness, whether the fault of the child or the parents/guardians, cannot be excused except for the reasons cited under excused absences.*

It should be evident that there are many potential excuses for why a particular student may wish to be absent from individual classes or from a full day of instruction at school. Though there will surely be some additional truly unique "exceptions" to this rule, in general those listed as "excused" should set the standard and be used as a guide in making decisions in this area.

Parents/guardians should make every effort to see that their children are in school every day on time. Excessive tardiness and absences are not conducive to establishing good work habits or consistent learning. Each absence must be accounted for. Parents/guardians are encouraged to notify the office on the morning of the absence. In all cases, it is required that parents/guardians, upon the students return to school, provide a written excuse for each absence. Such excuse(s) must contain the reason and date(s) of the absence(s) and be signed by the parent/guardian. Any absence(s) not accounted for is automatically considered unexcused.

Student Dismissals From School During the School Day

Children cannot be excused without advanced written request by a parent/guardian, and must be released into the care of the parent/guardian unless otherwise noted.

No student may be released from school to anyone other than the parent, guardian, or child protective services personnel and law enforcement officers pursuant to law, unless the individuals name seeking release of the student appears on a list provided by the parent/guardian.

Parents/guardians are urged to make appointments with physicians, dentists, special tutors, etc. after school hours. If a request is necessary, parents/guardians must provide a note that includes the date, time, and reason for the release.

A student may not be released to either parent/guardian unless a custodial parent/guardian supplies the Superintendent of Schools with a certified copy of a court order or divorce decree to the contrary.

The Superintendent shall develop procedures to enable parents and guardians to amend the list of persons authorized to obtain the release of their children.

Coding System

The coding system will be as follows: Educational Event (X), Unexcused Absence (U), Legal Absence (A), Excused Tardy (T), Unexcused Tardy (V), Suspended No Tutor (S), Truant (R), In-School Suspension (H), Dismissed Early (D), Suspended Tutored (Y), Medical Tutor (M)

Attendance/Course Credit

Course credit will not be based on student attendance. A student's grade may be based on class participation as well as student's performance on homework, tests, papers, projects, etc. The individual classroom teacher through their daily evaluation of a student's effort, progress, and proficiency in their class decides the final grade to be earned.

Attendance Incentives

In an effort to encourage pupils to attend school, the district will periodically consider whether certain incentives should be created. Student demographics, along with the total academic program, will be investigated to develop incentive programs. Possible incentive areas may include, but are not limited to:

- Student awards given in assemblies, published literature, and announced at gatherings or over the public address system;
- A system of sharing student recognition with local organizations such as boy scouts, girls scouts, 4-H, etc. and with parents/guardians;
- Special social functions such as dances, dinners, etc.;
- Special assemblies;
- Establishment of clubs or organizations that appeal to the demographic audience;
- Create a positive school climate through the coordination of curricular elements such as projects, homework, testing, etc.;
- Specialized academic functions such as interdisciplinary projects;
- Organization of tutor or mentor groups led by responsible students or staff.

Disciplinary/Intervention Strategies

Disciplinary action, when necessary, will be firm, fair, and consistent so as to be the most effective in changing the student behavior. Unexcused absences will result in disciplinary action consistent with the district's code of conduct. Those penalties may include, but are not limited to: verbal warning; written referral; written or verbal notification to parent/guardian; time out; detention; suspension from athletics, social or extracurricular activities, or other privileges; in-school suspension. As a general rule, discipline will be progressive.

Students who are unable to attend school or class on a given day due to participation in a school-sponsored activity (i.e., music lessons, field trips), must meet with their teachers to make up any work missed. This also applies to any student who is absent, tardy or leaves early from school or a class due to illness or any other excused/unexcused reason.

Regardless of whether the absence is excused or unexcused, all students with an absence must, upon their return to school, consult with their teacher regarding missed work.

Students with any absence must make up test(s) or other missed work and/or turn in late assignment(s) for inclusion in their grade. Make-up opportunities must be provided. All assignments must be completed by a date specified by the student's teacher for the class in question. Students who do not take advantage of this opportunity will be graded accordingly.

Notice to Parents/Guardians

Parents/guardians will receive a plain language summary of the attendance policy at the start of each school year that will be published annually in the school district newsletter, *The Torchlight*. In addition, the full policy will be included in the student handbook grades 7-12. Summaries will appear in other district publications.

When necessary, a student's parents/guardians will be contacted, to remind them of the attendance policy, to explain the ramifications of unexcused absences, to stress the importance of class attendance, and to discuss appropriate intervention strategies to correct the situation.

Those students who do experience recurring attendance problems will be exposed to the strategies employed in this policy to help remedy the problem. Attendance issues of this magnitude emanate from a number of more complex issues, not solely from issues that can be solved by the school alone. Traditionally, these issues are ones that require the involvement of outside organizations such as family court, social services, professional counselors, law enforcement or other agencies.

General Procedures

The building principal or his/her designee will be responsible for reviewing the attendance records and initiating appropriate recommendation to address attendance issues in accordance with the comprehensive attendance policy as required under the provisions of the Regulation.